

North Finchley Office

331 Ballards Lane, London, N12 8LT

Tel: 0208 445 4008 Email: info@adam-hayes.co.uk Web: www.adam-hayes.co.uk

Glebelands Close, North Finchley, N12

£370,000

 2 Bedrooms  1 Bathroom  1 Reception

Key Features

- Two Bedrooms
- Modern Kitchen
- Fully Integrated Appliances
- Three Piece Bathroom Suite
- Lift Serviced
- Allocated Parking

Nearest Stations

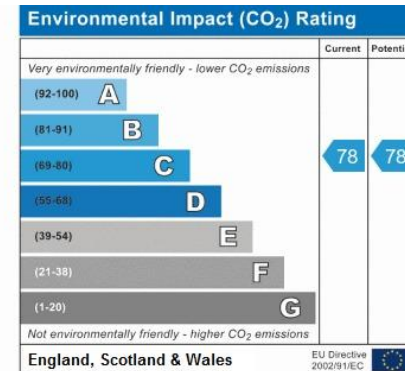
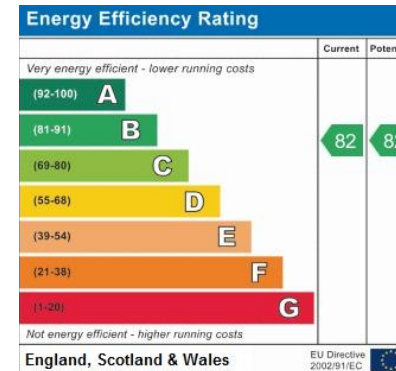
West Finchley (0.8 miles)

Finchley Central (0.9 miles)

Woodside Park (1.1 miles)

Property Description

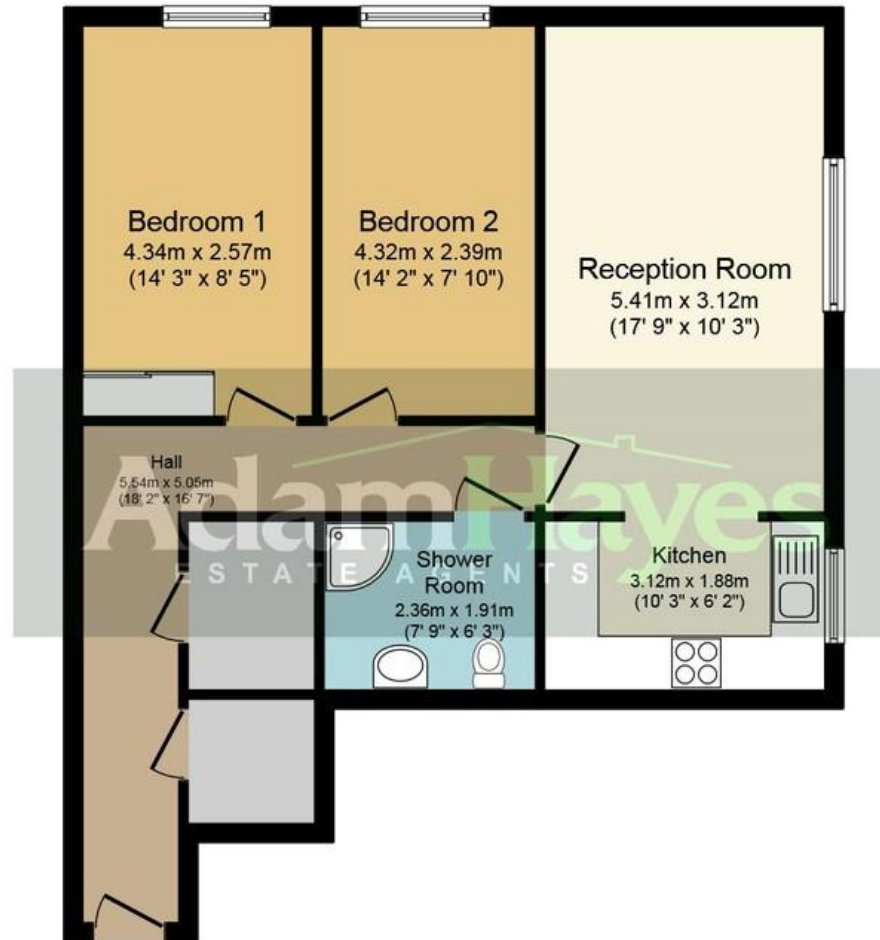
Set back off North Finchley High Road in this popular lift serviced block and within walking distance to multiple shopping and transport facilities is this well presented two bedroom, fifth floor corner apartment. The property benefits from a modern kitchen with fully integrated appliances, allocated parking, double glazing and a three piece bathroom suite and a security video entryphone system. However to really appreciate the size, location and condition an internal viewing is highly recommended via vendors sole agents Adam Hayes estate agents on 020 8445 4008.



North Finchley Office

331 Ballards Lane, London, N12 8LT

Tel: 0208 445 4008 Email: info@adam-hayes.co.uk Web: www.adam-hayes.co.uk



Floor Plan

Total floor area 66.0 sq. m. (710 sq. ft.) approx

This plan is for illustration purposes only and may not be representative of the property. Plan not to scale.

These particulars, whilst believed to be accurate are set out as a general outline only for guidance and do not constitute any part of an offer or contract. Intending purchasers should not rely on them as statements or representation of fact, but must satisfy themselves by inspection or otherwise as to their accuracy. We have not carried out a detailed survey not tested the services, appliances and specific fittings. Room sizes should not be relied upon for carpets and furnishings. The measurements given are approximate. No person in this firms employment has the authority to make or give any representation or warranty in respect of the property.