



Cedar Drive, East Finchley N2

£495,000

 2 Bedrooms  1 Bathrooms  1 Receptions



East Finchley Office

158 High Road, East Finchley, London, N2 9AS

Tel: 0208 883 2621 Email: info@adam-hayes.co.uk Web: www.adam-hayes.co.uk

Cedar Drive, East Finchley N2

£495,000

 2 Bedrooms  1 Bathrooms  1 Receptions

Key Features

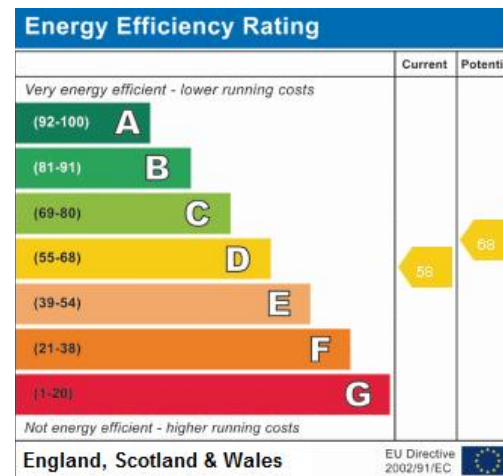
- Two Bedrooms
- First Floor
- Unmodernised
- Chain Free
- Garage
- Communal Gardens

Nearest Stations

East Finchley Station	0.1 miles
Highgate Station	1.2 miles
Finchley Central Station	1.4 miles

Property Description

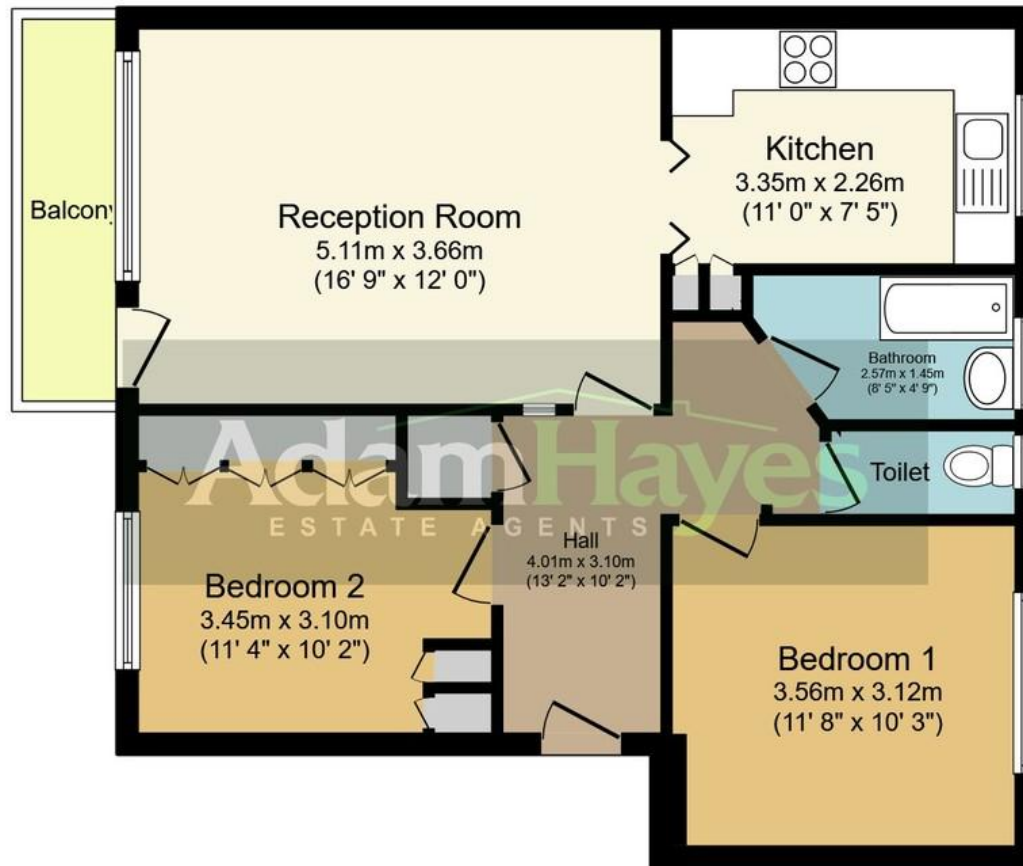
Situated in this popular residential development off the Causeway and within minutes walk of East Finchley tube station is this unmodernised two double bedroom first floor purpose built apartment. The property benefits from its own balcony, parquet wooden flooring, double glazing, use of communal gardens and is offered chain free. To really appreciate the size, location and potential, an internal viewing is highly recommended via vendors sole agents Adam Hayes Estate Agents.



East Finchley Office

158 High Road, East Finchley, London, N2 9AS

Tel: 0208 883 2621 Email: info@adam-hayes.co.uk Web: www.adam-hayes.co.uk



Floor Plan

Total floor area 62.3 sq.m. (671 sq.ft.) approx

This plan is for illustration purposes only and may not be representative of the property. Plan not to scale.

These particulars, whilst believed to be accurate, are set out as a general outline only for guidance and do not constitute any part of an offer or contract. Intending purchasers or prospective tenants should not rely on them as statements or representation of fact, but must satisfy themselves by inspection or otherwise as to their accuracy. We have not carried out a detailed survey, not tested the services, appliances and specific fittings. Room sizes should not be relied upon for carpets and furnishings. The measurements given are approximate. No person in this firm's employment has the authority to make or give any representation or warranty in respect of the property.