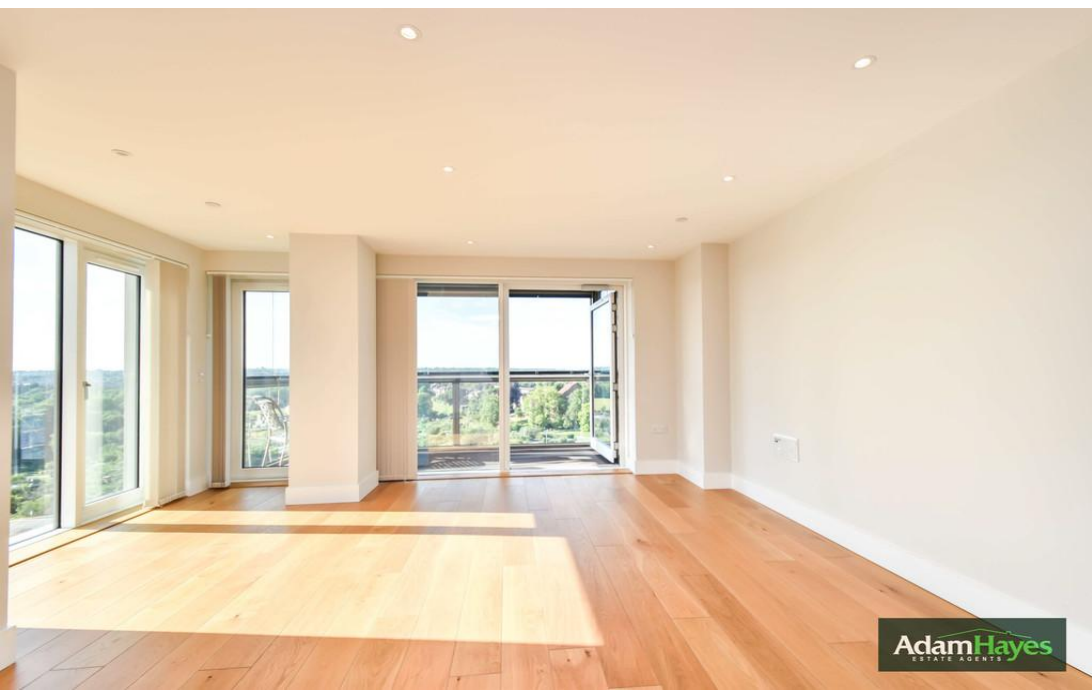




Acton Walk, Whetstone, N20

OIEO £500,000

-  2 Bedrooms
-  2 Bathrooms
-  1 Receptions



North Finchley Office

365 Ballards Lane, North Finchley, London, N12 8LL

Tel: 020 8445 4008 Email: info@adam-hayes.co.uk Web: www.adam-hayes.co.uk

Acton Walk, Whetstone, N20

OIEO £500,000

 2 Bedrooms  2 Bathrooms  1 Receptions

Key Features

- Two Bedrooms
- Two Bathrooms
- Eighth Floor
- Terrace
- Lift Serviced Block
- Gated Parking

Nearest Stations

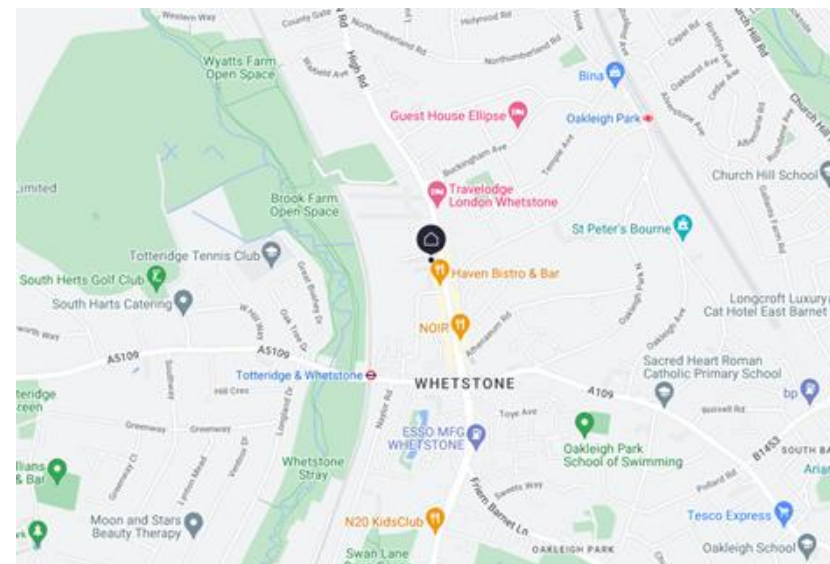
Totteridge & Whetstone Station 0.3 miles


Oakleigh Park Station 0.5 miles

New Barnet Station 1.1 miles

Property Description

Conveniently located within minutes' walk to Totteridge & Whetstone tube station in this modern lift serviced block, is this well presented two double bedroom, two bathroom (one ensuite) fourth floor apartment. The property benefits from an approximately 18ft living room with a modern open plan kitchen, an approximately 22ft west facing roof terrace, underground gated parking and ample storage. To really appreciate the size, condition and location an internal viewing is highly recommended via vendors sole agents Adam Hayes Estate Agents.

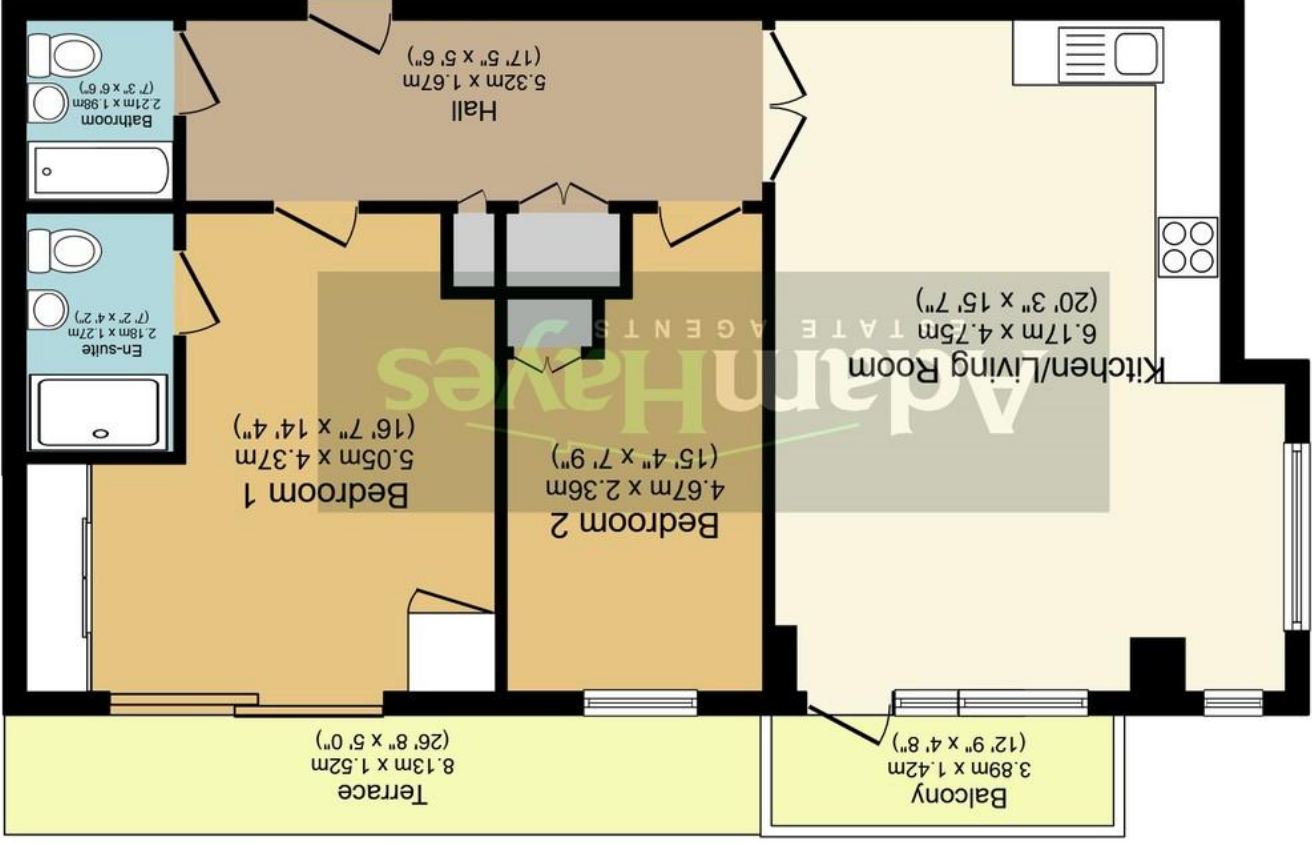


Energy Efficiency Rating		Current	Potential
Very energy efficient - lower running costs			
(92-100) A			
(81-91) B		85	85
(69-80) C			
(55-68) D			
(39-54) E			
(21-38) F			
(1-20) G			
Not energy efficient - higher running costs			
England, Scotland & Wales		EU Directive 2002/91/EC	

North Finchley Office

365 Ballards Lane, North Finchley, London, N12 8LL

Tel: 020 8445 4008 Email: info@adam-hayes.co.uk Web: www.adam-hayes.co.uk



Floor Plan

Total floor area 69.6 sq.m. (749 sq.ft.) approx

This plan is for illustration purposes only and may not be representative of the property. Plan not to scale.

These particulars, whilst believed to be accurate are set out as a general outline only for guidance and do not constitute any part of an offer or contract. Intending purchasers should not rely on them as statements or representations or fact, but must satisfy themselves by inspection or otherwise as to their accuracy. We have not carried out a detailed survey not tested the services, appliances and specific fittings. Room sizes should not be relied upon for carpets and furnishings. The measurements given are approximate. No person in this firm's employment has the authority to make or give any representation or warranty in respect of the property.