





North Finchley Office

365 Ballards Lane, North Finchley, London, N12 8LL

Tel: 020 8445 4008 Email: info@adam-hayes.co.uk Web: www.adam-hayes.co.uk

Ashurst Road, North Finchley, N12

OIEO £900,000

3 Bedrooms 1 Bathrooms 2 Receptions

Key Features

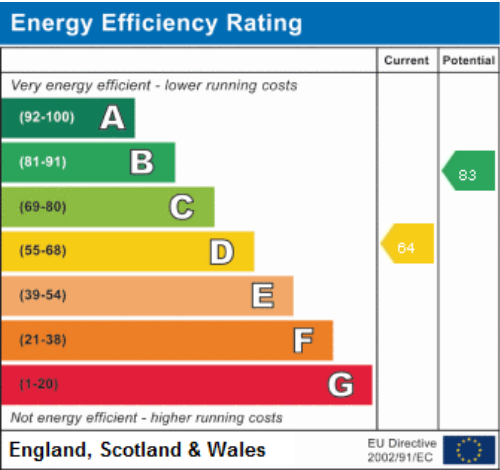
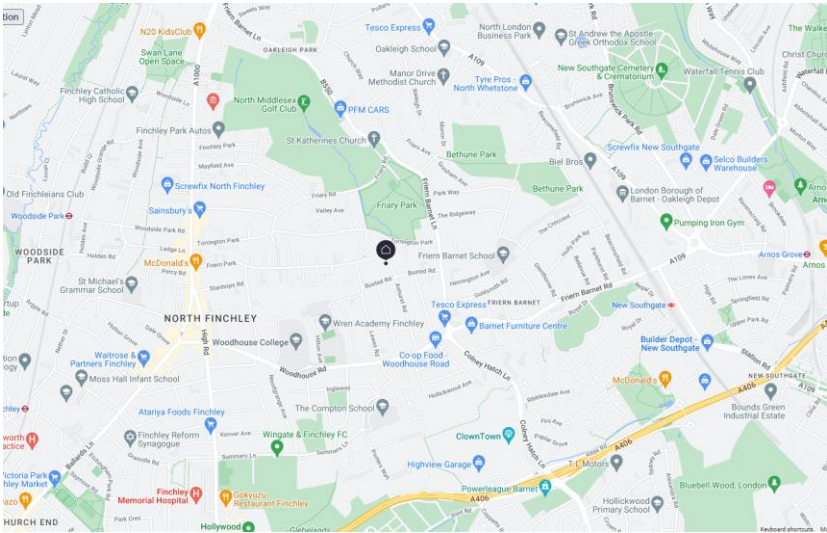
- Three Bedrooms
- Semi-Detached
- Extended
- Parking
- Eat In Kitchen
- Mature Garden

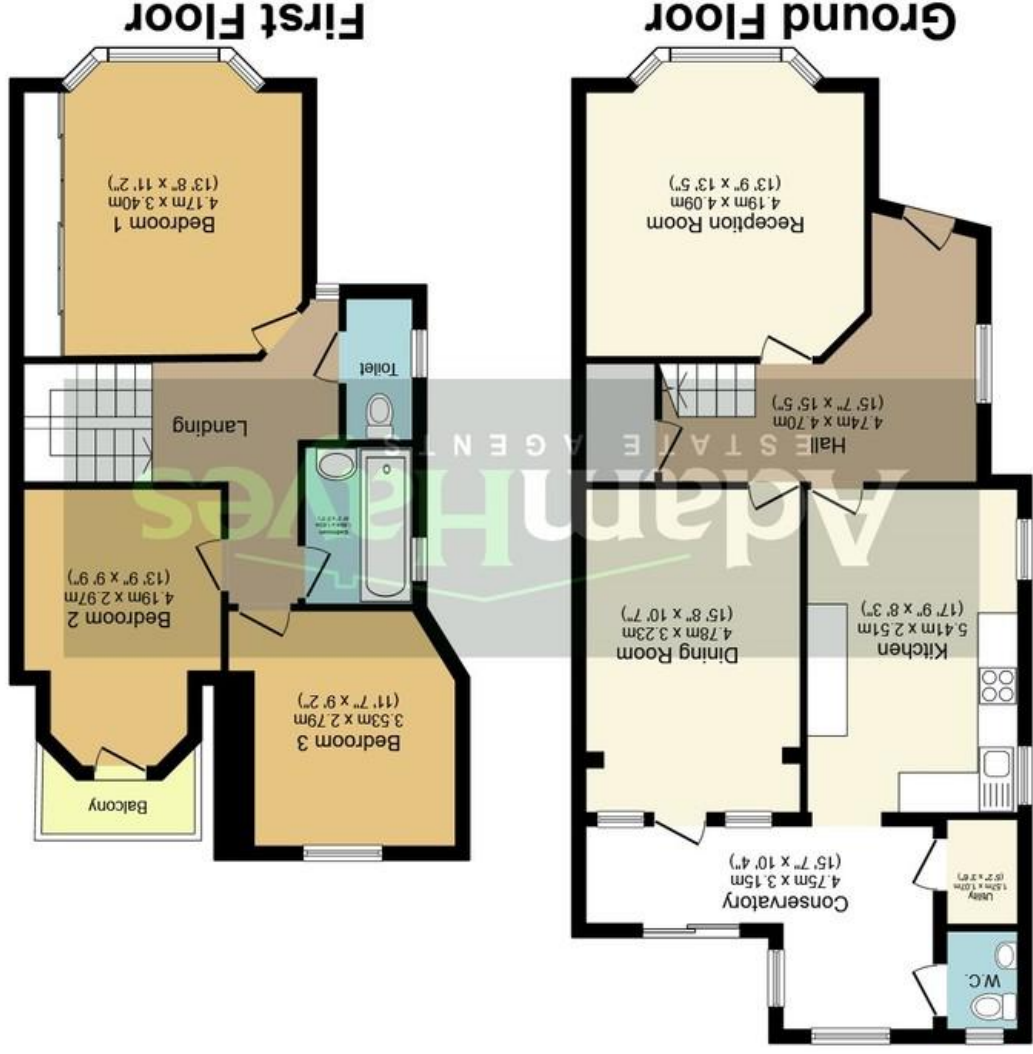
Nearest Stations

New Southgate Station	0.9 miles
Woodside Park Station	1.0 miles
West Finchley Station	1.2 miles

Property Description

Situated in this popular residential tree lined road off Woodhouse Road and set within the catchment area for a number of popular schools is this well presented and extended three-bedroom semi-detached house. The property is a short walk to Friary Park and benefits from two separate reception rooms, a modern kitchen diner, an approximate 70ft mature rear garden, off street parking and gas central heating. To really appreciate the size, location and condition an internal viewing is highly recommended via vendors sole agents Adam Hayes Estate Agents.





Total floor area 139.2 sq.m. (1,499 sq.ft.) approx

This plan is for illustration purposes only and may not be representative of the property. Plan not to scale.

These particulars, whilst believed to be accurate are set out as a general outline only for guidance and do not constitute any part of an offer or contract. Intending purchasers should not rely on them as statements or representations or representations of fact, but must satisfy themselves by inspection or otherwise as to their accuracy. We have not carried out a detailed survey not tested the services, appliances and specific fittings. Room sizes should not be relied upon for carpets and furnishings. The measurements given are approximate. No person in this firm's employment has the authority to make or give any representation or warranty in respect of the property.